



Best Battery Powered Generator 150W Powered Lithium Ion Battery Portable Power Stations for Outside

Our Product Introduction

for more products please visit us on battery-generator.com

Basic Information

- Place of Origin: China
- Brand Name: SYEV
- Certification: UL,FCC,CE,ROSH,PSE,UN38.3,SAA,UKCA
- Model Number: S150
- Minimum Order Quantity: 1
- Price: USD100~150
- Packaging Details: Film inner protect+carton box
- Delivery Time: depends on order quantity
- Payment Terms: T/T, L/C
- Supply Ability: 1000sets/month



Product Specification

- Product Name: Lithium Ion Battery Generator
- Model Number: S150
- Battery Type: Lithium Ion Battery
- Rated AC Output: 150W
- Rated Capacity: 52500mAh, 3.7V/194Wh Or 42000mAh, 3.7V/155Wh
- DC Output: DC5521: 9V-12.6V/10A (MAX 14.5A)
- Overall Dimension: 195 * 90 * 171 Mm
- Net Weight: About 2.7kg
- Charging Time: 5~7hours By 15V/3A



More Images



Product Description

Best Battery Powered Generator 150W Powered Lithium Ion Battery Portable Power Stations for Outside

Products HD pictures:





Product Features:

- For AC devices (<150W):TV, Standing Fan, Laptop, Lights, Shaver,CPAP,Projector
- For DC12V devices:LED Bulbs, Car Fridge, Air Compressor, Vacuum Cleaner.
- For USB devices:Smartphone, Tablet, Headlamp, USB Fan, Bluetooth Watch.

Product Specs Details:

MODEL NUMBER		150W Powered Lithium Ion Battery Generator
Rated AC Output		150W
Rated Capacity		52500 mAh,3.7V/194 Wh
Standard Capacity		42000 mAh,3.7V/155Wh
Battery Type		Lithium Ion battery
UPS		Y
LCD Display		Battery remaining capacity, Battery fault, total output power,Over temperature,input power
Housing Material		ABS+PC (fireproofing V0)
Charging Temperature Range		0 ~40
Charge Way	AC Input	AC adapter: DC 15V/3A
	Car Charge	12V
	Solar Charge (MPPT)	14V-22V/3A(Max)
Charge Time	Wall charge	About 5~6 / 5~7hours
	Car Charge Time	About 9~10H
	Solar Charge Time	About 5~6hours with 500W panels
USB Output	USB-Type-C	PD 18W
	USB-A	QC3.0*1,18W ; 5V/2.4A*1
DC port Output		2 x DC5521:9-12.6V/10A(14.5A Max)
LED Light		2W Ultra bright LED Flashlight
AC Output	Output waveform	Modified Sine Wave
	Output voltage	AC100V-240V
	Output frequency	50/60Hz
	AC Rated/Max. output	150W/200W
	Peak AC output	300W

Working Temperature Range	-10~40
Authentication	UL,FCC,CE,ROSH,PSE,UN38.3,SAA,UKCA
Product Size	204*91*187mm
Weight	about 2.65Kg
Lifecycles	500 times
Color	as pictures, Can be customized
Accessories	1xPortable Power Supply 1xAC Adapter 1xCar Charger 1xCigarette Lighter Adapter 1xUser Manual

Products Details:

S150 Portable Power Station



S150 Introduction



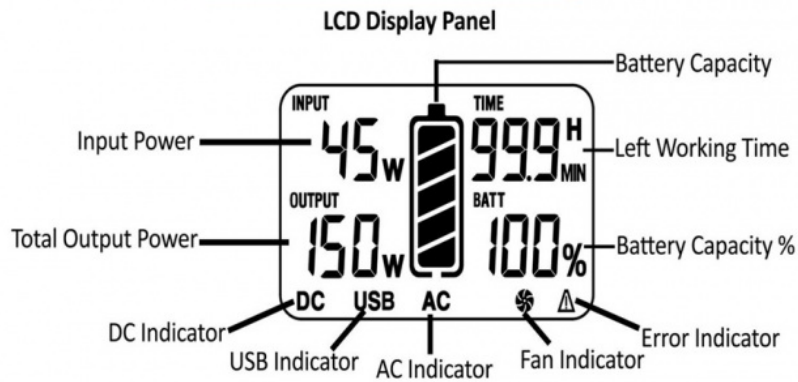
S150 structure is based on a highly innovative design, It's an off-grid portable battery system, also called portable solar generator/energy storage system/power box/AC power bank, etc.
It can help you easily get rid of power shortage, enjoy freedoms of electricity.

- It's used for charging your electronic equipments whenever you need power.
- It's small and mobile, you can carry it to everywhere

S150 Specifications



S150 Specifications



How To Recharge S150

3 Ways to Recharge



- 1- Recharge from AC Adapter:
within 5-6 hours
- 2- Recharge from Car Port:
within 9-10 hours
- 3- Recharge from Solar Panel 50W:
within 5-6 hours (in full sun)

Relevant Products:

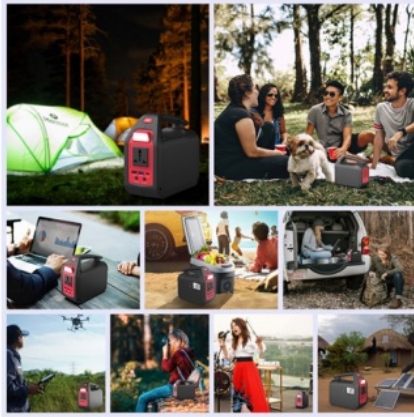


Common Application:

S150-For Outdoor Activities



S150 for Emergency



Power Shortage, Power Cut, CPAP, Hurricane, Typhoon, Earthquake, Disasters, etc



How To Use S150



It is a plug-and-play machine, just need to plug the power cable of your devices into the socket of S150, then press the button to turn it on

2W LCD flashlight function:
When flashlight in off status
One press the light switch: Turn on the light (100%)
Press it again: Adjust the brightness (50%)
Press it again: Turn off the light
When flashlight in off status
Long press the light switch for 2 sec: go into SOS mode
Press it again: go into flash mode
Press it again: Turn off the light

FAQ about Product:

S150-FAQ



01

About T500 Safety

- 1- Over-Voltage Protection
- 2- Low-Voltage Protection
- 3- Over-Current Protection
- 4- Short-Circuit Protection
- 5- Over-Load Protection
- 6- Over-Temperature Protection

What devices can T500 power for?

Working time = $155\text{Wh} \times 0.85 /$
operating power of your device.

02

03

What devices can T500 power for?

Please note that the AC output port can only charge/power devices that operate at less than 150-Watt.

Packing and Shipping:

Contact Form:



Jackie.Shaw

Whatsapp: +86-13317100403

Mail: Jackie.shaw@foxmail.com



HaiNan SynYune EV Technology Co.,Ltd



SYJackie@163.com



battery-generator.com

No. 4 Jipu Road, Xinyingwan District, Yangpu EDZ, Hainan Province